 **OMCD
GROUP**
hard materials network

GREEN ECONOMY

HARD METAL
RECYCLING



WHO WE ARE

The OMCD Group is very sensitive to **sustainability** issues and has for years adopted a **'green economy'**, which consists of carrying out its business and development activities while impacting the external environment as little as possible.

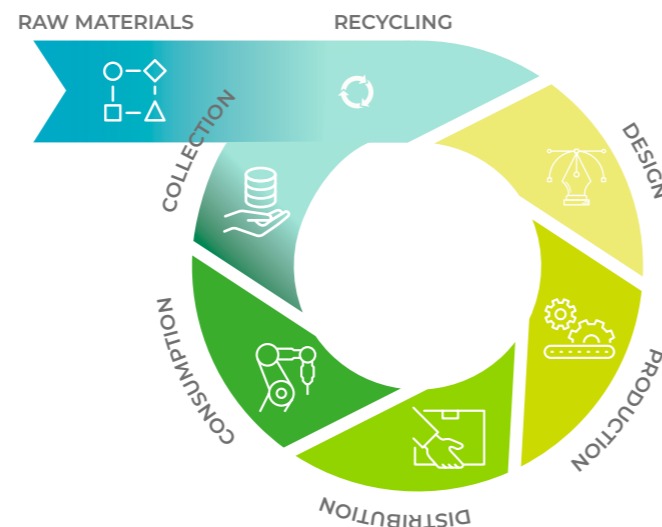
The activities within this policy include the adoption of a **circular economy**, based on the **COLLECTION OF HARD METAL WASTE** resulting from industrial processes and products that have reached the end of their use, in order to **RECYCLE** them in our environmentally friendly plant and then **REUSE THEM IN A NEW PRODUCTION CYCLE**.

Currently RECYCLED POWDERS cover about 70 % of OMCD group's needs. In order to be ever closer to the environment and increase its sustainability, HI.Lab, the physical-metallurgical laboratory of the Group, is now starting a second regeneration process, based on using a waste product from the dairy industry (lactic acid) to recover a special waste containing cobalt and tungsten.

Our circular economy cycle is characterized by total in-house waste management. Among the **main Italian producers of Hard Metal parts**, we are able to offer maximum competence in managing obstacles relating to the treatment of all types of special waste containing this material.

The more scrap you provide us with, the greater your contribution to protecting the environment!

-  RAW MATERIALS
-  RECYCLING
-  DESIGN
-  PRODUCTION
-  DISTRIBUTION
-  CONSUMPTION
-  COLLECTION



WHY PROVIDE US WITH YOUR CARBIDE WASTE?



1. BECAUSE YOU BENEFIT THE ENVIRONMENT

The regenerated raw material can be used within a new production cycle, thus contributing to a **reduction in the exploitation of natural resources** and a decrease in the negative environmental effects of mining.

Our plant uses a mechanical **carbothermal regeneration process** without the addition of chemicals (zinc free) and harmful toxic substances, resulting in a lower environmental impact than any standard recycling process. We are working to ensure that the electricity used for this process increasingly comes from **renewable sources**, with a target of 100 % in the next five years.

2. BECAUSE THE RESULTING PRODUCT IS OF HIGH QUALITY

Our Hard Metal waste recycling plant **was established on a pilot basis in 2003** within HI.Lab, the physical-metallurgical laboratory of OMCD Group. The results were so astonishing in terms of quality that we have started a large-scale production.

Our **recycled powders consist of only tungsten and cobalt, the best raw material** used in the Hard Metal production cycle to ensure the absolute quality of sintered products.

3. BECAUSE YOU ARE GUARANTEED CONTINUITY OF SUPPLY

Tungsten and cobalt are on the EU's list of 'Critical Raw Materials (CRM)'. Thanks to the recycling of Hard Metal scrap, OMCD Group limits the use of virgin raw materials, freeing itself from geopolitical events, the production strategies and monopolistic intentions expressed by multinational companies in the sector. With this **supply autonomy**, it can thus guarantee its customers security and continuity of supply of finished products, with important environmental implications as well.

4. BECAUSE YOU GAIN ECONOMICALLY

After using our products you would have to deal with their disposal, facing costs and managing complex paperwork. With our recovery, we relieve you of this duty by providing our expertise in this field, taking care of the pickup of special waste containing Hard Metal for free and even **providing you with concrete financial returns**.

WHAT SERVICES DO WE OFFER?

ADVICE

ADVICE on regulations and on management of the bureaucratic practices of registration and disposal and/or recovery to which the producers of waste must comply with.

AUTHORIZATION

Possession of the **NECESSARY AUTHORIZATION** for collection, transport, temporary storage and recovery of waste.

TRANSPORTATION

TRANSPORT AT OUR EXPENSE with vehicles listed in the national register of environmental managers and drivers with ADR license.

EVALUATION

QUALITATIVE EVALUATION of waste and assistance from our HI.Lab in interpreting results.

VALUE OF THE SLUDGE

Determination of the value of the sludge materials by analysis carried out by our HI.Lab laboratory.

VALUE OF THE WASTE

Determination of the value of solid waste based on the percentage of tungsten contained in it, detected by suitable equipment.

CONTAINERS

The **SUPPLY OF SUITABLE CONTAINERS** on loan for free for the storage of waste containing Hard Metal.

REGISTRATION CAT.8

REGISTRATION IN CAT. 8 CLASS of the National Register of Environmental Managers for activities of intermediation and trade.



WHAT TYPES OF SCRAPS DO WE COLLECT?



EER 12 01 03 / 12 01 21 / 12 01 99

Solid parts and carbide swarf.



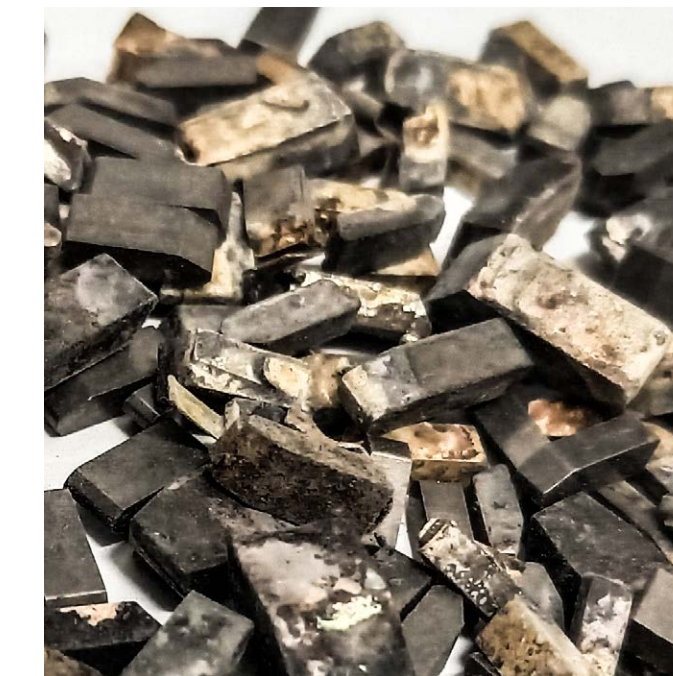
EER 12 01 03 / 12 01 21 / 12 01 99

Carbide inserts containing TiC-TaC.



EER 12 01 01 / 17 04 05

Hard Metal dies mounted on steel.



EER 12 01 03

Solid parts and carbide scraps with brazing alloys.



EER 12.01.03 / 12.01.21

Solid parts tungsten/copper.



EER 12 01 14 *

Emulsion wet powders containing tungsten.



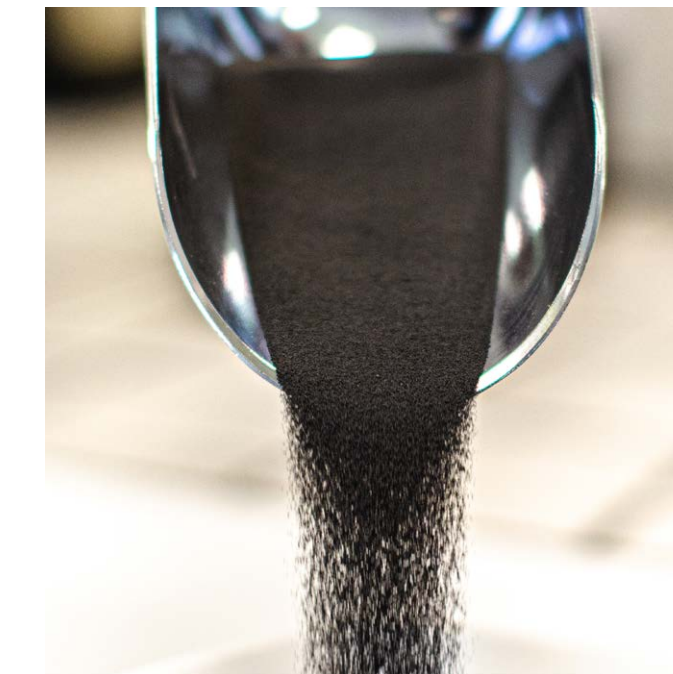
EER 12 01 18 *

Oil sludge containing tungsten.



EER 15 02 02 *

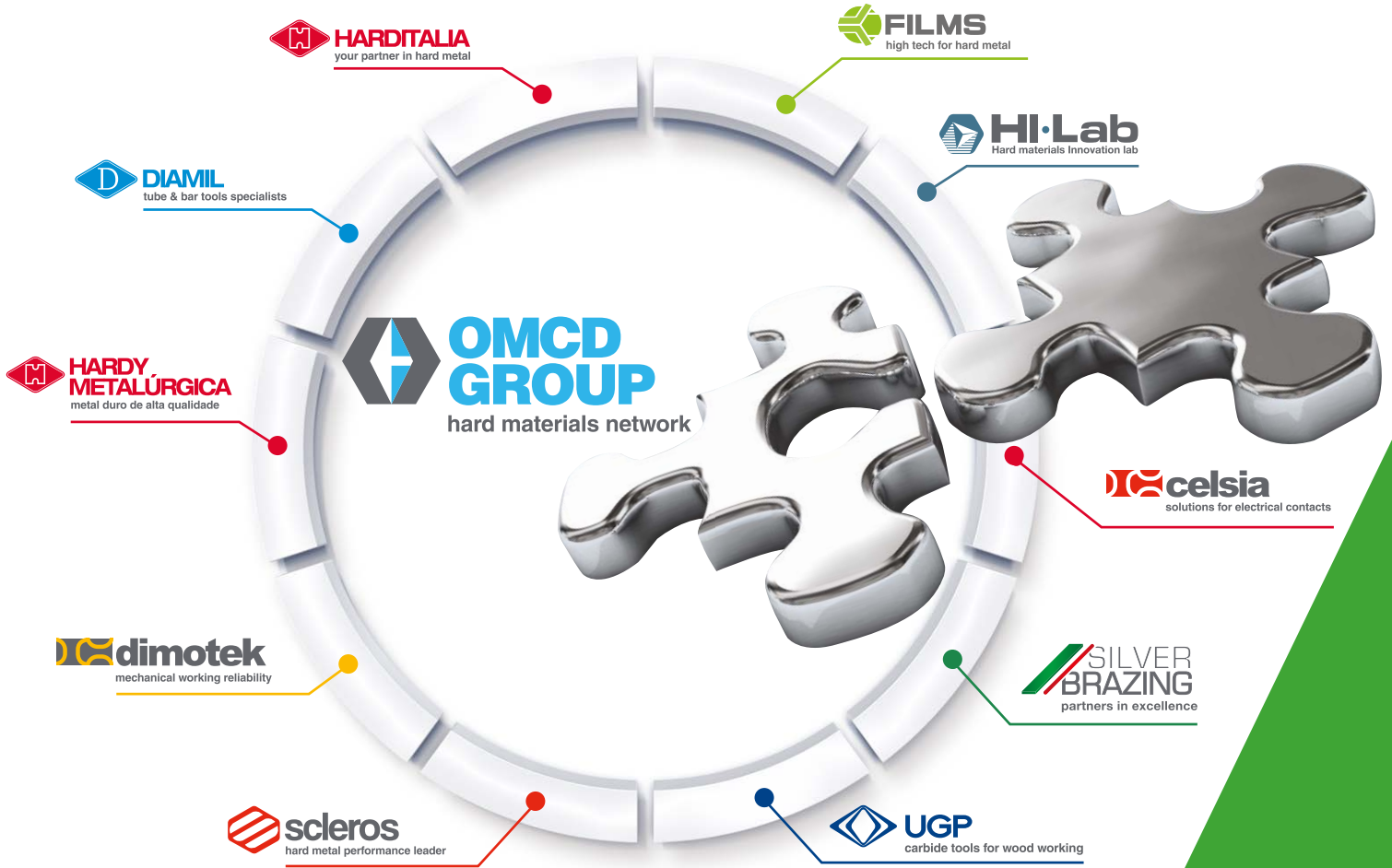
Cartridge filters containing tungsten, both in emulsion and oil.



EER 16 03 03 *

Hard Metal Powders.

FILMS
high tech for hard metal
OMCD GROUP



The OMCD Group, headed by the Tedeschi family for two generations, is a multinational company made up of **10 brands active in the field of Hard Metal, sintered copper/tungsten and precious metals.**

Its centralized structure and **synergy between each brand** guarantees **control of the entire production process**, from the refining of minerals to the micro-finishing operations.

Technical **competence**, continuous **innovation** and focus on **customer satisfaction** are just some of the reasons why every day more and more companies rely on OMCD Group as their commercial business partner.



GREEN ECONOMY - HARDMETAL RECYCLING DEPARTMENT
A brand of F.I.L.M.S. SpA

C.FISC/P.IVA: 00116980038
ecorecycling@omcd.it - www.omcd.it

☎ (+39) 0323 062044

Sede operativa
Via al Cimitero, 6 - 28877 Anzola d'Ossola (VB) Italia
Sede legale
Via Megolo, 43 - 28877 Anzola d'Ossola (VB) Italia

